



# Calor XHT-FT Series

## XHT8000FT Datasheet

12V Front Terminal VRLA-AGM

### Specifications

Voltage (Vdc)	12V
Watts Per Cell (30-Sec to 1.67VPC @25°C)	1831.17
Watts Per Cell (5-Min to 1.67VPC @25°C)	1287.17
Watts Per Cell (15-Min to 1.67VPC @25°C)	821.50
Max Charge Current (A)	66.70 (5 sec)
Max Discharge Current (A)	1660 (5 sec)
Short Circuit Current (A)	4570 (5 sec)
Internal Resistance (mΩ)	Approx. 2.17 mΩ
Terminal Type	I2 thread alloy terminal to accept M6 bolt
Terminal Torque	51.7±10.3 kgf·cm / 44.9±9.0 lbf·in 5.1±1.0 N·m
Container Material	Flame-Retardant Polymer Material (UL 94-V0)
Weight (kg. / lb.)	Approx. 54.0kg / 119.05lb
Length (L) (mm / in)	558.0 ± 2.5mm / 21.97 ± 0.10in
Width (W) (mm / in)	126.0 ± 1.5mm / 4.96 ± 0.06in
Height (H) (mm / in)	323.0 ± 2.5mm / 12.72 ± 0.10in
Design Life	12+ Years in Standby Service at 25°C; Up to 10 Years in Standby Service at 35°C
Operating Temperature	Nominal: 25°C (77°F) Discharge: -40°C - 65°C (-40°F - 149°F) Charge / Storage -40°C - 65°C (-40°F - 149°F)
Float Charging Voltage	13.5 - 13.8VDC / battery @ 25°C (77°F)
Eq. Charging Voltage	14.4 - 15.0VDC / battery @ 25°C (77°F)
Self-Discharge	Less than 10% after 90 days, can be stored up to 6 months & 10 months with equalization charge @ 25°C (77°F). Full recharge required before use. Charge sooner if stored above 25°C (77°F).



### KEY FEATURES

- Valve Regulated Lead Acid (VRLA) Battery Constructed with High Durability Material (UL 94-V0)
- Maintenance-Free, Absorbent Glass Mat (AGM) Technology for Efficient Gas Recombination of up to 99%
- Pure Lead Construction and Catalyst 2X Proprietary Additive Technology

### APPLICATIONS

- Designed for High-Rate & High-Temperature Standby Service
- Optimized for Harsh Environments with Extended Service Life

### SAFETY & COMPLIANCE

- Built in Accordance with IEC 60896-21/22:2004
- UL1973 Listed (MH66728)
- UL1989 Recognized (MH14533)
- Certified by TUV NORD according to ISO 9001:2015



© 2026 CSB Energy Technology Co., Ltd. All Rights Reserved.

CSB Energy Technology Co., Ltd. reserves the right to change specifications or design without notice. Visit [csb-battery.com](http://csb-battery.com) for the latest information.



# Calor XHT-FT Series

## XHT8000FT Datasheet

12V Front Terminal VRLA-AGM

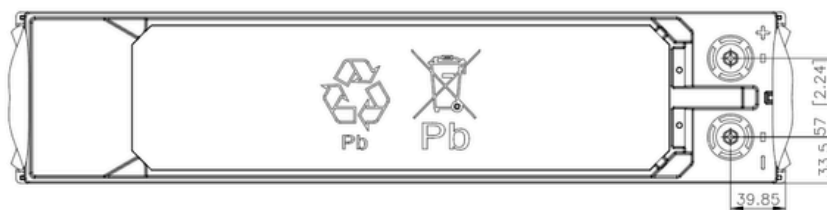
### Constant Current Discharge Characteristics Per Battery: Amperes (25°C / 77°F)

F.V/Time	30SEC	60SEC	2MIN	5MIN	8MIN	10MIN	15MIN	20MIN	30MIN	45MIN	60MIN	90MIN
10.02V (1.67VPC)	1101	1037	940	749	627	572	458	384	282	204	159	113
10.50V (1.75VPC)	784	761	739	625	551	497	408	353	264	197	156	111
10.80V (1.80VPC)	619	598	577	550	478	438	373	320	244	187	149	107

### Constant Power Discharge Characteristics Per Battery: Watts (25°C / 77°F)

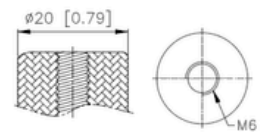
F.V/Time	30SEC	60SEC	2MIN	5MIN	8MIN	10MIN	15MIN	20MIN	30MIN	45MIN	60MIN	90MIN
10.02V (1.67VPC)	10987	10314	9370	7723	6710	6074	4929	4117	3070	2289	1820	1307
10.50V (1.75VPC)	9088	8834	8124	6846	5920	5388	4541	3791	2897	2213	1763	1278
10.80V (1.80VPC)	7338	7076	6823	6201	5280	4892	4171	3482	2720	2105	1688	1236

### Line Drawing

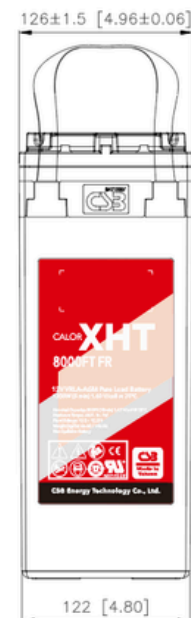
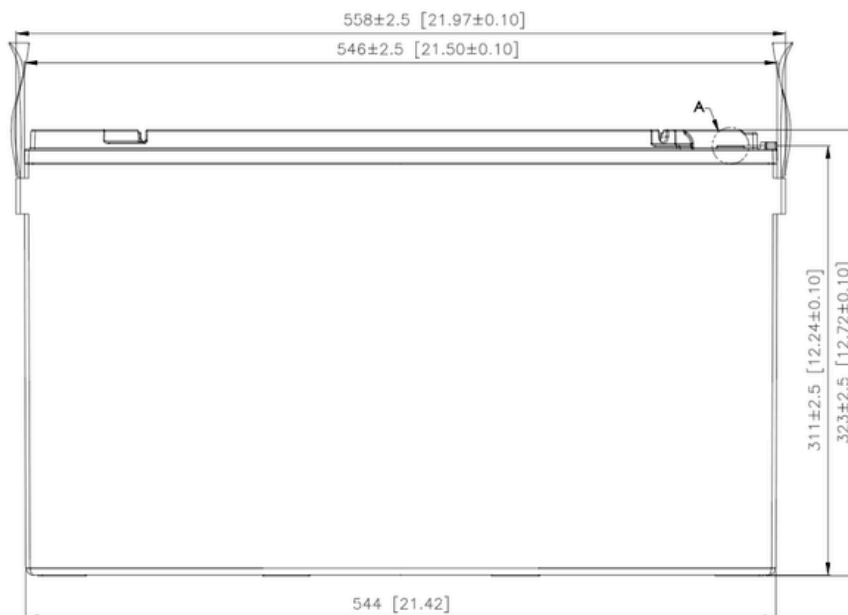


### Detail A Drawing(4:1)

12



[M6 bolt]



© 2026 CSB Energy Technology Co., Ltd. All Rights Reserved.

CSB Energy Technology Co., Ltd. reserves the right to change specifications or design without notice. Visit [csb-battery.com](http://csb-battery.com) for the latest information.