



# Calor XHT-FT Series

## XHT8000FT Datasheet

12V Front Terminal VRLA-AGM



Valve Regulated Lead Acid (VRLA) Battery, Maintenance-Free

Absorbent Glass Mat (AGM) with Exclusive Grid for 99% Gas Recombination

Pure Lead Construction and Catalyst 2X Proprietary Additive Technology

Constructed with High-Impact Resistant ABS plastic (UL 94-V0)

Designed for High-Rate and High-Temperature standby applications

Optimized for Harsh Environments with Extended Service Life

Built in Accordance with IEC 60896-21/22:2004; UL1973 Listed (MH66728) and UL1989 Recognized (MH14533); TUV NORD certified (ISO 9001:2015)



### Specifications

Voltage (Vdc)	12
Watts Per Cell (30-Sec 1.67 VPC @ 25°C)	1831.17
Watts Per Cell (5-Min 1.67 VPC @ 25°)	1287.17
Watts Per Cell (15-Min 1.67 VPC @ 25°)	821.50
Max Charge Current (A)	66.70
Max Discharge Current (A)	1660 (5sec)
Short Circuit Current (A)	4570
Internal Resistance	Approx. 2.17 mΩ
Terminal Type	I2 thread lead alloy terminal to accept M6 bolt
Terminal Torque	51.7±10.3 Kgf·cm / 44.9±9.0 Lbf·in / 5.1±1.0 N·m
Container Material	PC-ABS Flame retardant material (UL 94-V0)
Weight (kg. / lb., Approx.)	66.6 / 146.82
Length (L) (mm / in)	558.0±2.5 / 21.97±0.10
Width (W) (mm / in)	127.0±1.5 / 5.00±0.06
Height (H) (mm / in)	325.0±2.5 / 12.79±0.10
Design Life	12+ Years in Standby Service at 25°C ; Up to 10 Years in Standby Service at 35°C
Operating Temperature	Discharge: -40°C - 65°C (-40°F - 149°F) Charge/Storage: -40°C - 65°C (-40°F - 149°F)
Float Charging Voltage	13.5 - 13.8 Vdc/battery 25°C (77°F)
Eq. Charging Voltage	14.4 - 15.0 Vdc/battery 25°C (77°F)
Self-Discharge	Less than 10% after 90 days, can be stored up to 6 months and 10 months with equalization charge* at 25C (77F); Full recharging is required before usage, and charged sooner if stored at higher temperature than 25C (77F).



# Calor XHT-FT Series

## XHT8000FT Datasheet

12V Front Terminal VRLA-AGM

### Constant Current Discharge Characteristics Per Battery: Amperes (25°C, 77°F)

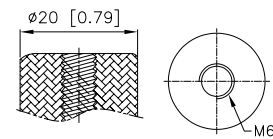
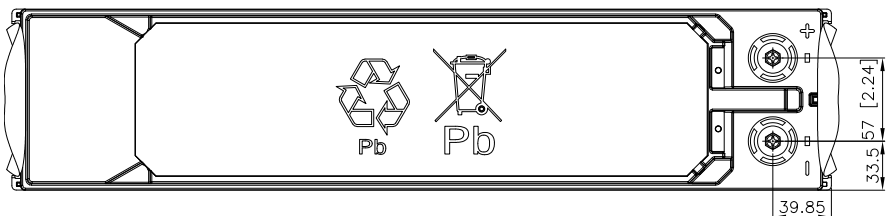
F.V/Time	30SEC	60SEC	2MIN	5MIN	8MIN	10MIN	15MIN	20MIN	30MIN	45MIN	60MIN	90MIN
10.02V (1.67 VPC)	1101	1037	940	749	627	572	458	384	282	204	159	113
10.50V (1.75 VPC)	784	761	739	625	551	497	408	353	264	197	156	111
10.80V (1.80 VPC)	619	598	577	550	478	438	373	320	244	187	149	107

### Constant Power Discharge Characteristics Per Battery: Watts (25°C, 77°F)

F.V/Time	30SEC	60SEC	2MIN	5MIN	8MIN	10MIN	15MIN	20MIN	30MIN	45MIN	60MIN	90MIN
10.02V (1.67 VPC)	10987	10314	9370	7723	6710	6074	4929	4117	3070	2289	1820	1307
10.50V (1.75 VPC)	9088	8834	8124	6846	5920	5388	4541	3791	2897	2213	1763	1278
10.80V (1.80 VPC)	7338	7076	6823	6201	5280	4892	4171	3482	2720	2105	1688	1236

Detail A Drawing(4:1)

12



[M6 bolt]

