



# XHRL-FT Series

## XHRL12720WFTFR Datasheet

12V Front Terminal VRLA-AGM

### Specifications

Voltage (Vdc)	12
Watts Per Cell (30-Sec 1.67 VPC @ 25°C)	2033.83
Watts Per Cell (5-Min 1.67 VPC @ 25°)	1239.33
Watts Per Cell (15-Min 1.67 VPC @ 25°)	719.66
Max Charge Current (A)	70.0
Max Discharge Current (A)	1680 (5sec)
Short Circuit Current (A)	4631
Internal Resistance	Approx. 1.84 mΩ
Terminal Type	I2 thread lead alloy terminal to accept M6 bolt
Terminal Torque	51.7±10.3 Kgf·cm / 44.9±9.0 Lbf·in / 5.1±1.0 N·m
Container Material	PP (UL 94-HB) & Flame Retardant (94-V0) available upon request
Weight (kg. / lb., Approx.)	54.0 / 119.05
Length (L) (mm / in)	558.0±2.5 / 21.97±0.10
Width (W) (mm / in)	126.0±1.5 / 4.96±0.06
Height (H) (mm / in)	255.0±2.5 / 10.04±0.10
Design Life	Up to 10 Years in Standby Service at 25°C Eurobat (20°C): >12 Years Very Long Life
Operating Temperature	Nominal: 25°C (77°F) Discharge: -15°C - 50°C (5°F-122°F) Charge/Storage: -15°C - 40°C (5°F - 104°F)
Float Charging Voltage	13.5 - 13.8 Vdc/battery 25°C (77°F)
Eq. Charging Voltage	14.4 - 15.0 Vdc/battery 25°C (77°F)
Self-Discharge	Less than 10% after 90 days, can be stored up to 6 months and 10 months with equalization charge* at 25C (77F); Full recharging is required before usage, and charged sooner if stored at higher temperature than 25C (77F).



Valve Regulated Lead Acid (VRLA) Battery

Maintenance-Free, Absorbent Glass Mat (AGM) Technology for Efficient Gas Recombination of up to 99%

Pure Lead Construction and Proprietary Elements

Designed for High-Rate UPS, Float Service Standby Power Applications

Built in Accordance with IEC 60896-21/22:2004 and UL1989 Recognized (MH14533)





# XHRL-FT Series

## XHRL12720WFTFR Datasheet

12V Front Terminal VRLA-AGM

### Constant Current Discharge Characteristics Per Battery: Amperes (25°C, 77°F)

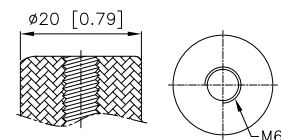
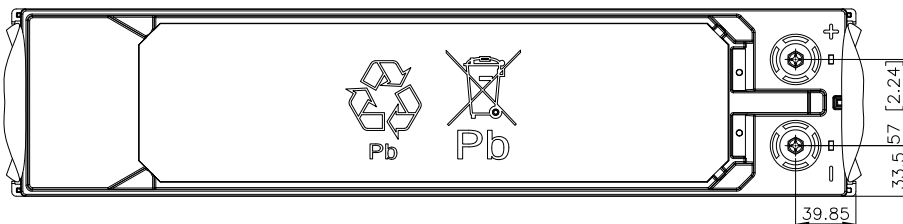
F.V/Time	30SEC	60SEC	2MIN	5MIN	8MIN	10MIN	15MIN	20MIN	30MIN	45MIN	60MIN	90MIN
10.02V (1.67 VPC)	1086	1046	971	726	583	520	397	323	231	164	127	89.6
10.50V (1.75 VPC)	887	865	815	629	521	462	365	300	220	160	124	87.6
10.80V (1.80 VPC)	728	707	687	557	466	417	339	276	207	152	119	84.8

### Constant Power Discharge Characteristics Per Battery: Watts (25°C, 77°F)

F.V/Time	30SEC	60SEC	2MIN	5MIN	8MIN	10MIN	15MIN	20MIN	30MIN	45MIN	60MIN	90MIN
10.02V (1.67 VPC)	12203	11093	9888	7436	6121	5408	4318	3535	2590	1882	1475	1046
10.50V (1.75 VPC)	10271	9528	8516	6640	5523	4963	4084	3326	2491	1835	1442	1027
10.80V (1.80 VPC)	8521	8269	7547	6128	5044	4598	3766	3109	2373	1761	1392	998

Detail A Drawing(4:1)

12



[M6 bolt]

