



XPL-FT Series

XPL7000FT Datasheet

12V Front Terminal VRLA-AGM

Specifications

Voltage (Vdc)	12
Watts Per Cell (30-Sec 1.67 VPC @ 25°C)	1766.00
Watts Per Cell (5-Min 1.67 VPC @ 25°)	1144.17
Watts Per Cell (15-Min 1.67 VPC @ 25°)	642.50
Max Charge Current (A)	58.30
Max Discharge Current (A)	1550 (5sec)
Short Circuit Current (A)	4132
Internal Resistance	Approx. 2.01 mΩ
Terminal Type	I2 thread lead alloy terminal to accept M6 bolt
Terminal Torque	51.7±10.3 Kgf·cm / 44.9±9.0 Lbf·in / 5.1±1.0 N·m
Container Material	PP (UL 94-HB) & Flame Retardant (94-V0) available upon request
Weight (kg. / lb., Approx.)	49.70 / 109.57
Length (L) (mm / in)	558.0±2.5 / 21.97±0.10
Width (W) (mm / in)	126.0±1.5 / 4.96±0.06
Height (H) (mm / in)	255.0±2.5 / 10.04±0.10
Design Life	Up to 10 Years in Standby Service at 25°C. Eurobat (20°C): >12 Years Very Long Life
Operating Temperature	Nominal: 25°C (77°F) Discharge: -15°C - 50°C (5°F-122°F) Charge/Storage: -15°C - 40°C (5°F - 104°F)
Float Charging Voltage	13.5 - 13.8 Vdc/battery 25°C (77°F)
Eq. Charging Voltage	14.4 - 15.0 Vdc/battery 25°C (77°F)
Self-Discharge	Less than 10% after 90 days, can be stored up to 6 months and 10 months with equalization charge* at 25C (77F); Full recharging is required before usage, and charged sooner if stored at higher temperature than 25C (77F).



Valve Regulated Lead Acid (VRLA) Battery

Maintenance-Free, Absorbent Glass Mat (AGM) Technology for Efficient Gas Recombination of up to 99%

Pure Lead Construction and Proprietary Elements

Designed for High-Rate UPS, Float Service Standby Power Applications

Built in Accordance with IEC 60896-21/22:2004, UL1973 Listed (MH66728) and UL1989 Recognized (MH14533)

Certified by TUV NORD according to ISO 9001:2015





XPL-FT Series

XPL7000FT Datasheet

12V Front Terminal VRLA-AGM

Constant Current Discharge Characteristics Per Battery: Amperes (25°C, 77°F)

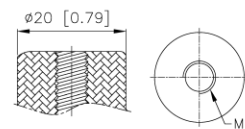
F.V/Time	30SEC	60SEC	2MIN	5MIN	8MIN	10MIN	15MIN	20MIN	30MIN	45MIN	60MIN	90MIN
10.02V (1.67 VPC)	944	910	876	661	526	464	353	288	209	152	118	82.7
10.50V (1.75 VPC)	771	751	732	573	465	416	325	269	199	148	115	81.0
10.80V (1.80 VPC)	632	614	596	502	418	372	300	249	188	142	111	78.5

Constant Power Discharge Characteristics Per Battery: Watts (25°C, 77°F)

F.V/Time	30SEC	60SEC	2MIN	5MIN	8MIN	10MIN	15MIN	20MIN	30MIN	45MIN	60MIN	90MIN
10.02V (1.67 VPC)	10596	9998	8928	6865	5520	4902	3855	3191	2366	1754	1382	988
10.50V (1.75 VPC)	8937	8716	7674	6030	5019	4473	3629	3006	2269	1704	1349	970
10.80V (1.80 VPC)	7401	7192	6988	5474	4554	4118	3395	2814	2160	1637	1303	945

Detail A Drawing(4:1)

12



[M6 bolt]

