



# XPL Series

## XPL6700 Datasheet

12V Top Terminal VRLA-AGM



Valve Regulated Lead Acid (VRLA) Battery

Maintenance-Free, Absorbent Glass Mat (AGM) Technology for Efficient Gas Recombination of up to 99%

Pure Lead Construction and Proprietary Elements

Designed for High-Rate UPS, Float Service Standby Power Applications

Built in Accordance with IEC 60896-21/22:2004, UL1973 Listed (MH66728) and UL1989 Recognized (MH14533)

Certified by TUV NORD according to ISO 9001:2015



### Specifications

Voltage (Vdc)	12
Watts Per Cell (30-Sec 1.67 VPC @ 25°C)	1466.67
Watts Per Cell (5-Min 1.67 VPC @ 25°)	1054.83
Watts Per Cell (15-Min 1.67 VPC @ 25°)	651.83
Max Charge Current (A)	55.80
Max Discharge Current (A)	1350 (5sec)
Short Circuit Current (A)	4018
Internal Resistance	Approx. 2.33 mΩ
Terminal Type	I2 thread lead alloy terminal to accept M6 bolt
Terminal Torque	51.7±10.3 Kgf·cm / 44.9±9.0 Lbf·in / 5.1±1.0 N·m
Container Material	PP (UL 94-HB) & Flame Retardant (94-V0) available upon request
Weight (kg. / lb., Approx.)	47.90 / 105.57
Length (L) (mm / in)	343.0±2.5 / 13.50±0.10
Width (W) (mm / in)	170.0±2.0 / 6.69±0.0
Height (H) (mm / in)	275.7±2.5 / 10.85±0.10
Design Life	Up to 10 Years in Standby Service at 25°C. Eurobat (20°C): >12 Years Very Long Life
Operating Temperature	Nominal: 25°C (77°F) Discharge: -15°C - 50°C (5°F-122°F) Charge/Storage: -15°C - 40°C (5°F - 104°F)
Float Charging Voltage	13.5 - 13.8 Vdc/battery 25°C (77°F)
Eq. Charging Voltage	14.4 - 15.0 Vdc/battery 25°C (77°F)
Self-Discharge	Less than 10% after 90 days, can be stored up to 6 months and 10 months with equalization charge* at 25C (77F); Full recharging is required before usage, and charged sooner if stored at higher temperature than 25C (77F).



# XPL Series

## XPL6700 Datasheet

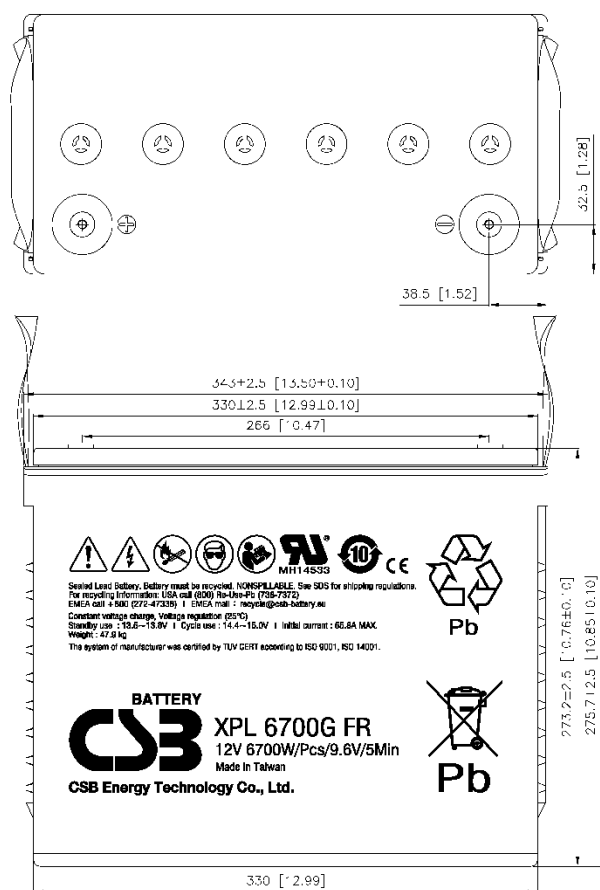
12V Top Terminal VRLA-AGM

### Constant Current Discharge Characteristics Per Battery: Amperes (25°C, 77°F)

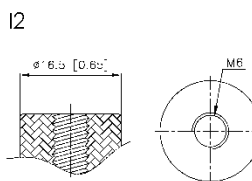
F.V/Time	30SEC	60SEC	2MIN	5MIN	8MIN	10MIN	15MIN	20MIN	30MIN	45MIN	60MIN	90MIN
10.02V (1.67 VPC)	885	824	725	583	490	442	349	277	200	144	113	81.3
10.50V (1.75 VPC)	674	663	607	503	428	393	315	255	190	139	111	80.5
10.80V (1.80 VPC)	555	549	538	440	384	347	288	237	181	133	107	79.1

### Constant Power Discharge Characteristics Per Battery: Watts (25°C, 77°F)

F.V/Time	30SEC	60SEC	2MIN	5MIN	8MIN	10MIN	15MIN	20MIN	30MIN	45MIN	60MIN	90MIN
10.02V (1.67 VPC)	8800	8279	7840	6329	5361	4882	3911	3179	2383	1740	1379	997
10.50V (1.75 VPC)	7232	7092	6857	5718	4894	4459	3623	2984	2278	1681	1342	981
10.80V (1.80 VPC)	6258	6258	6077	5155	4482	4083	3322	2776	2163	1612	1295	956



Detail A Drawing(4:1)



[M6 bolt]

