



XHRL-FT Series

XHRL12900WFTFR Datasheet

12V Front Terminal VRLA-AGM

Specifications

Voltage (Vdc)	12
Watts Per Cell (30-Sec 1.67 VPC @ 25°C)	2069.83
Watts Per Cell (5-Min 1.67 VPC @ 25°)	1403.33
Watts Per Cell (15-Min 1.67 VPC @ 25°)	907.67
Max Charge Current (A)	90.00
Max Discharge Current (A)	1900 (5sec)
Short Circuit Current (A)	5102
Internal Resistance	Approx. 1.86 mΩ
Terminal Type	I2 thread lead alloy terminal to accept M6 bolt
Terminal Torque	51.7±10.3 Kgf·cm / 44.9±9.0 Lbf·in / 5.1±1.0 N·m
Container Material	PP (UL 94-HB) & Flame Retardant (94-V0) available upon request
Weight (kg. / lb., Approx.)	69.50 / 153.22
Length (L) (mm / in)	558.0±2.5 / 21.97±0.10
Width (W) (mm / in)	126.0±1.5 / 4.96±0.06
Height (H) (mm / in)	323.0±2.5 / 12.72±0.10
Design Life	Up to 10 Years in Standby Service at 25°C. Eurobat (20°C): >12 Years Very Long Life
Operating Temperature	Nominal: 25°C (77°F) Discharge: -15°C - 50°C (5°F-122°F) Charge/Storage: -15°C - 40°C (5°F - 104°F)
Float Charging Voltage	13.5 - 13.8 Vdc/battery 25°C (77°F)
Eq. Charging Voltage	14.4 - 15.0 Vdc/battery 25°C (77°F)
Self-Discharge	Less than 10% after 90 days, can be stored up to 6 months and 10 months with equalization charge* at 25C (77F); Full recharging is required before usage, and charged sooner if stored at higher temperature than 25C (77F).



Valve Regulated Lead Acid (VRLA) Battery

Maintenance-Free, Absorbent Glass Mat (AGM) Technology for Efficient Gas Recombination of up to 99%

Pure Lead Construction and Proprietary Elements

Designed for High-Rate UPS, Float Service Standby Power Applications

Built in Accordance with IEC 60896-21/22:2004, UL1973 Listed (MH66728) and UL1989 Recognized (MH14533)

Certified by TUV NORD according to ISO 9001:2015





XHRL-FT Series

XHRL12900WFTFR Datasheet

12V Front Terminal VRLA-AGM

Constant Current Discharge Characteristics Per Battery: Amperes (25°C, 77°F)

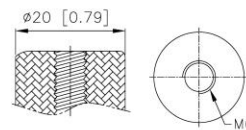
F.V/Time	30SEC	60SEC	2MIN	5MIN	8MIN	10MIN	15MIN	20MIN	30MIN	45MIN	60MIN	90MIN
10.02V (1.67 VPC)	1221	1128	1041	842	698	635	506	407	291	208	160	112
10.50V (1.75 VPC)	887	862	838	710	622	558	458	371	273	200	156	110
10.80V (1.80 VPC)	770	742	715	626	546	498	420	337	254	189	149	106

Constant Power Discharge Characteristics Per Battery: Watts (25°C, 77°F)

F.V/Time	30SEC	60SEC	2MIN	5MIN	8MIN	10MIN	15MIN	20MIN	30MIN	45MIN	60MIN	90MIN
10.02V (1.67 VPC)	12419	11562	10445	8420	7376	6629	5446	4488	3285	2399	1896	1361
10.50V (1.75 VPC)	10237	9946	8950	7634	6603	5992	5007	4094	3094	2316	1842	1334
10.80V (1.80 VPC)	8210	7928	7655	7148	6008	5546	4664	3748	2909	2207	1769	1295

Detail A Drawing(4:1)

I2



[M6 bolt]

