



XHRL Series

XHRL12475W Datasheet

12V Top Terminal VRLA-AGM



Valve Regulated Lead Acid (VRLA) Battery

Maintenance-Free, Absorbent Glass Mat (AGM) Technology for Efficient Gas Recombination of up to 99%

Pure Lead Construction and Proprietary Elements

Designed for High-Rate UPS, Float Service Standby Power Applications

Built in Accordance with IEC 60896-21/22:2004, UL1973 Listed (MH66728) and UL1989 Recognized (MH14533)

Certified by TUV NORD according to ISO 9001:2015



Specifications

Voltage (Vdc)	12
Watts Per Cell (30-Sec 1.67 VPC @ 25°C)	--
Watts Per Cell (5-Min 1.67 VPC @ 25°)	880.17
Watts Per Cell (15-Min 1.67 VPC @ 25°)	478.17
Max Charge Current (A)	47.50
Max Discharge Current (A)	800 (5sec)
Short Circuit Current (A)	3449
Internal Resistance	Approx. 2.30 mΩ
Terminal Type	I2 thread lead alloy terminal to accept M6 bolt
Terminal Torque	51.7±10.3 Kgf·cm / 44.9±9.0 Lbf·in / 5.1±1.0 N·m
Container Material	PP (UL 94-HB) & Flame Retardant (94-V0) available upon request
Weight (kg. / lb., Approx.)	36.20 / 79.78
Length (L) (mm / in)	343.0±2.5 / 13.50±0.10
Width (W) (mm / in)	170.0±2.0 / 6.69±0.0
Height (H) (mm / in)	216.6±2.5 / 8.53±0.10
Design Life	Up to 10 Years in Standby Service at 25°C. Eurobat (20°C): >12 Years Very Long Life
Operating Temperature	Nominal: 25°C (77°F) Discharge: -15°C - 50°C (5°F-122°F) Charge/Storage: -15°C - 40°C (5°F - 104°F)
Float Charging Voltage	13.5 - 13.8 Vdc/battery 25°C (77°F)
Eq. Charging Voltage	14.4 - 15.0 Vdc/battery 25°C (77°F)
Self-Discharge	Less than 10% after 90 days, can be stored up to 6 months and 10 months with equalization charge* at 25C (77F); Full recharging is required before usage, and charged sooner if stored at higher temperature than 25C (77F).



XHRL Series

XHRL12475W Datasheet

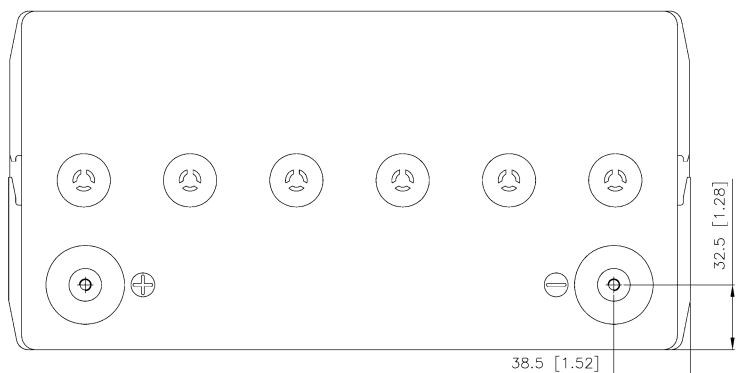
12V Top Terminal VRLA-AGM

Constant Current Discharge Characteristics Per Battery: Amperes (25°C, 77°F)

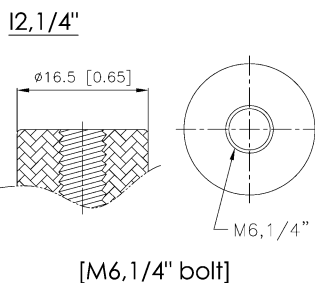
F.V/Time	2MIN	4MIN	5MIN	6MIN	8MIN	10MIN	15MIN	20MIN	30MIN	45MIN	60MIN	90MIN
10.02V (1.67 VPC)	683	552	504	461	399	347	261	210	154	109	84.8	59.9
10.50V (1.75 VPC)	587	464	437	409	357	314	243	197	148	105	82.6	58.9
10.80V (1.80 VPC)	500	411	397	370	322	288	225	185	140	101	79.7	57.2

Constant Power Discharge Characteristics Per Battery: Watts (25°C, 77°F)

F.V/Time	2MIN	4MIN	5MIN	6MIN	8MIN	10MIN	15MIN	20MIN	30MIN	45MIN	60MIN	90MIN
10.02V (1.67 VPC)	7081	5758	5281	4846	4232	3700	2869	2323	1725	1238	978	701
10.50V (1.75 VPC)	6181	5133	4715	4399	3849	3403	2707	2216	1671	1208	959	693
10.80V (1.80 VPC)	5589	4619	4317	4041	3513	3150	2524	2092	1605	1168	932	678



Detail A Drawing(3:1)



[M6, 1/4" bolt]

