



TPL Series

TPL121000TFR Datasheet

12V Front Terminal VRLA-AGM

Specifications

Voltage (Vdc)	12
Ah Capacity (8-Hr 1.75 VPC @ 25°C)	102
Ah Capacity (20-Hr 1.75 VPC @ 25°C)	110
Ah Capacity (8-Hr 1.80 VPC @ 25°C)	100
Max Charge Current (A)	30.0
Max Discharge Current (A)	800
Short Circuit Current (A)	2132
Internal Resistance (mΩ)	Approx. 4.00
Terminal Type	I2 thread lead alloy terminal to accept M6 bolt
Terminal Torque	51.7±10.3 Kgf·cm / 44.9±9.0 Lbf·in / 5.1±1.0 N·m
Container Material	Flame Retardant ABS (UL 94-V0)
Weight (kg. / lb., Approx.)	34.80 / 76.70
Length (L) (mm / in)	390.0±2.5 / 15.35±0.10
Width (W) (mm / in)	105.0±1.5 / 4.13±0.06
Height (H) (mm / in)	280.0±2.5 / 11.02±0.10
Design Life	Up to 12 Years in Standby Service at 25°C. Eurobat (20°C): >12 Years Very Long Life
Operating Temperature	Nominal: 25°C (77°F) Discharge: -15°C - 50°C (5°F-122°F) Charge/Storage: -15°C - 40°C (5°F - 104°F)
Float Charging Voltage	13.5 - 13.8 Vdc/battery 25°C (77°F)
Eq. Charging Voltage	14.4 - 15.0 Vdc/battery 25°C (77°F)
Self-Discharge	Less than 10% after 90 days, can be stored up to 6 months at 25°C (77°F); Fully recharging is required before usage, and charged sooner if stored at higher temperature than 25°C (77°F).



Valve Regulated Lead Acid (VRLA) Battery

Maintenance-Free, Absorbent Glass Mat (AGM) Technology for Efficient Gas Recombination of up to 99%

Pure Lead Construction and Proprietary Elements

Designed for Float Service Standby Power Applications

Built in Accordance with IEC 60896-21/22:2004, UL1973 Listed (MH66728) and UL1989 Recognized (MH14533)

Certified by TUV NORD according to ISO 9001:2015





TPL Series

TPL121000TFR Datasheet

12V Front Terminal VRLA-AGM

Constant Current Discharge Characteristics Per Battery: Amperes (25°C, 77°F)

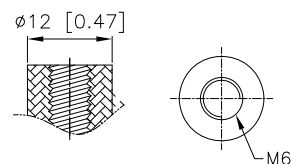
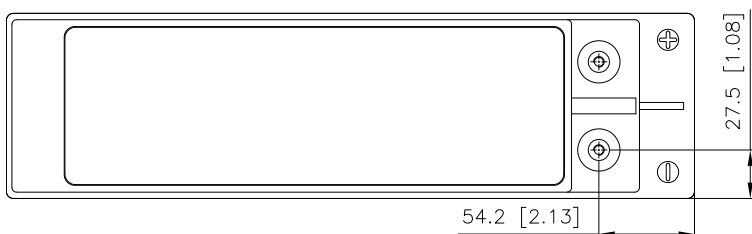
F.V/Time	15MIN	30MIN	60MIN	90MIN	2HR	3HR	4HR	5HR	6HR	8HR	10HR	20HR
10.02V (1.67 VPC)	203	123	72.6	52.9	41.9	29.8	23.4	19.4	16.6	12.9	10.7	5.55
10.50V (1.75 VPC)	184	117	71.1	52.0	41.2	29.4	23.1	19.2	16.4	12.7	10.5	5.47
10.80V (1.80 VPC)	164	111	68.7	50.8	40.2	28.7	22.6	18.8	16.0	12.5	10.4	5.37

Constant Power Discharge Characteristics Per Battery: Watts (25°C, 77°F)

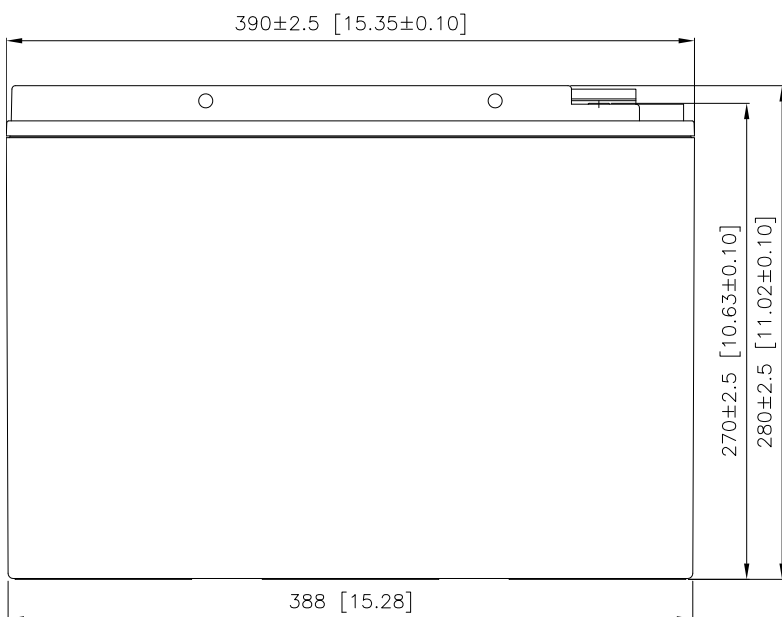
F.V/Time	15MIN	30MIN	60MIN	90MIN	2HR	3HR	4HR	5HR	6HR	8HR	10HR	20HR
10.02V (1.67 VPC)	2117	1370	843	619	488	344	270	223	192	152	127	66.6
10.50V (1.75 VPC)	1944	1327	828	611	482	341	265	221	189	148	123	65.3
10.80V (1.80 VPC)	1753	1261	798	598	472	334	262	217	187	147	122	65.0

Detail A Drawing(4:1)

I2



[M6 bolt]



105±1.5 [4.13±0.06]

