



MSJ Series

MSJ-800 Datasheet

2V VRLA-AGM



Valve Regulated Lead Acid (VRLA) Battery

Maintenance-Free, Absorbent Glass Mat (AGM) Technology for Efficient Gas Recombination of up to 99%

Pure Lead Construction and Proprietary Elements

Designed for High-Capacity Float Service Standby Power Applications

Built in Accordance with IEC 60896-21/22:2004, UL1973 Listed (MH66728) and UL1989 Recognized (MH14533)

Certified by TUV NORD according to ISO 9001:2015



Specifications

Voltage (Vdc)	2
Ah Capacity (8-Hr 1.75 VPC @ 25°C)	808.00
Ah Capacity (20-Hr 1.75 VPC @ 25°C)	840.00
Ah Capacity (8-Hr 1.80 VPC @ 25°C)	792.00
Max Charge Current (A)	240.00
Max Discharge Current (A)	4800 (5sec)
Short Circuit Current (A)	2848
Internal Resistance	Approx. 0.25 mΩ
Terminal Type	I4 thread copper alloy terminal to accept M8 bolt
Terminal Torque	126±25 Kgf·cm / 109±22 Lbf·in / 12.3±2.5 N·m
Container Material	Flame Retardant ABS (UL 94-V0)
Weight (kg. / lb., Approx.)	56.70 / 124.97
Depth (D) (mm / in)	373.0±2.5 / 14.69±0.10
Width (W) (mm / in)	174.0±2.0 / 6.85±0.08
Height (H) (mm / in)	339.0±2.5 / 13.15±0.10
Design Life	Up to 20 Years in Standby Service at 25°C. Eurobat (20°C): >12 Years Very Long Life
Operating Temperature	Nominal: 25°C (77°F) Discharge: -15°C - 50°C (5°F-122°F) Charge/Storage: -15°C - 40°C (5°F - 104°F)
Float Charging Voltage	2.21 ~ 2.25 Vdc/battery 25°C (77°F)
Eq. Charging Voltage	2.35 Vdc/battery 25°C (77°F)
Self-Discharge	Less than 10% after 90 days, can be stored up to 6 months and 10 months with equalization charge* at 25C (77F); Full recharging is required before usage, and charged sooner if stored at higher temperature than 25C (77F).



MSJ Series

MSJ-800 Datasheet

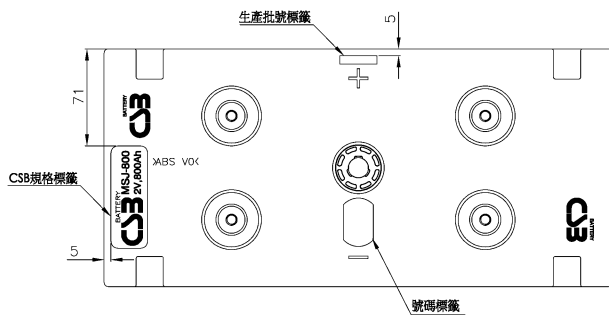
2V VRLA-AGM

Constant Current Discharge Characteristics Per Battery: Amperes (25°C, 77°F)

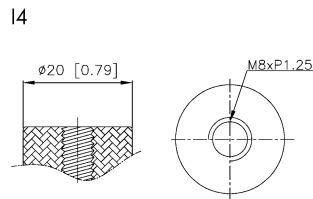
F.V/Time	15MIN	30MIN	60MIN	2HR	2.5HR	3HR	5HR	6HR	8HR	10HR	20HR	24HR
1.67V	1262	943	592	344	287	247	156	132	103	85.5	42.7	35.6
1.75V	1066	830	553	333	279	241	152	129	101	84.0	42.0	35.0
1.80V	912	735	510	319	268	232	147	126	99	81.8	40.9	34.1

Constant Power Discharge Characteristics Per Battery: Watts (25°C, 77°F)

F.V/Time	15MIN	30MIN	60MIN	2HR	2.5HR	3HR	5HR	6HR	8HR	10HR	20HR	24HR
1.67V	2292	1732	1084	658	548	472	310	266	203	159	79.6	66.4
1.75V	2012	1577	1024	640	535	462	305	262	199	156	78.2	65.2
1.80V	1804	1424	955	615	516	447	297	255	193	152	75.9	63.3



Detail A Drawing(3:1)



[M8 bolt]

