



# EVX Series

## EVX12750 Datasheet

12V Top Terminal VRLA-AGM

### Specifications

Voltage (Vdc)	12
Ah Capacity (8-Hr 1.75 VPC @ 25°C)	64.56
Ah Capacity (20-Hr 1.75 VPC @ 25°C)	75
Ah Capacity (8-Hr 1.80 VPC @ 25°C)	63.84
Max Charge Current (A)	22.50
Max Discharge Current (A)	500 (5sec)
Short Circuit Current (A)	1661
Internal Resistance	Approx. 4.7 mΩ
Terminal Type	B6 terminal to accept M6 bolt
Terminal Torque	51.7±10.3 Kgf·cm / 44.9±9.0 Lbf·in / 5.10±1.0 N·m
Container Material	PP (UL 94-HB)
Weight (kg. / lb., Approx.)	25.60 / 56.38
Length (L) (mm / in)	277.0±2.5 / 10.91±0.10
Width (W) (mm / in)	168.5±2.0 / 6.63±0.08
Height (H) (mm / in)	232.5±2.5 / 9.15±0.10
Design Life	400 cycles @ 100%DOD at 25°C 1800 cycles @ 30%DOD at 25°C
Operating Temperature	Nominal: 25°C (77°F) Discharge: -15°C - 50°C (5°F-122°F) Charge/Storage: -15°C - 40°C (5°F - 104°F)
Float Charging Voltage	--
Eq. Charging Voltage	14.4 - 15.0 Vdc/battery 25°C (77°F)
Self-Discharge	Less than 10% after 90 days, can be stored up to 6 months and 10 months with equalization charge* at 25C (77F); Full recharging is required before usage, and charged sooner if stored at higher temperature than 25C (77F).



Valve Regulated Lead Acid  
(VRLA) Battery

Maintenance-Free, Absorbent  
Glass Mat (AGM) Technology for  
Efficient Gas Recombination of  
up to 99%

Pure Lead Construction and  
Proprietary Elements

Designed for E-mobility or deep  
cycling applications

Built in Accordance with IEC  
60254-1:2005 / IEC60254-  
2:2008, UL1973 Listed  
(MH66728) and UL1989  
Recognized (MH14533)

Certified by TUV NORD  
according to ISO 9001:2015





# EVX Series

## EVX12750 Datasheet

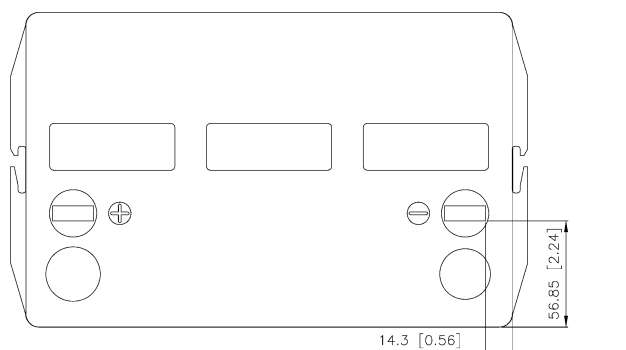
12V Top Terminal VRLA-AGM

### Constant Current Discharge Characteristics Per Battery: Amperes (25°C, 77°F)

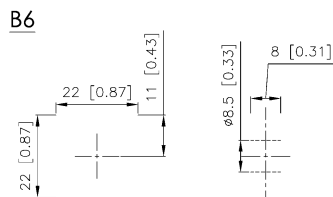
F.V/Time	30MIN	45MIN	60MIN	90MIN	2HR	3HR	4HR	5HR	6HR	8HR	10HR	20HR
10.02V (1.67 VPC)	81.6	60.3	48.6	35.2	27.6	19.7	15.4	12.7	10.7	8.25	6.74	3.80
10.50V (1.75 VPC)	78.1	57.9	46.8	33.9	26.7	19.2	15.0	12.4	10.5	8.07	6.60	3.75
10.80V (1.80 VPC)	75.8	56.4	45.7	33.2	26.2	18.9	14.8	12.2	10.3	7.98	6.54	3.72

### Constant Power Discharge Characteristics Per Battery: Watts (25°C, 77°F)

F.V/Time	30MIN	45MIN	60MIN	90MIN	2HR	3HR	4HR	5HR	6HR	8HR	10HR	20HR
10.02V (1.67 VPC)	906	664	532	386	309	223	175	144	122	94.3	77.0	41.2
10.50V (1.75 VPC)	863	637	513	373	299	216	170	140	119	92.3	75.7	40.7
10.80V (1.80 VPC)	839	620	500	367	293	213	168	139	118	91.3	75.0	40.6



Detail A Drawing(2:1)



[M6 bolt & nut]

