



EVX Series

EVX12520 Datasheet

12V Top Terminal VRLA-AGM

Specifications

Voltage (Vdc)	12
Ah Capacity (8-Hr 1.75 VPC @ 25°C)	50.72
Ah Capacity (20-Hr 1.75 VPC @ 25°C)	54.4
Ah Capacity (8-Hr 1.80 VPC @ 25°C)	49.76
Max Charge Current (A)	15.60
Max Discharge Current (A)	500 (5sec)
Short Circuit Current (A)	1391
Internal Resistance	Approx. 5.2 mΩ
Terminal Type	B4 terminal to accept M6 bolt
Terminal Torque	51.7±10.3 Kgf·cm / 44.9±9.0 Lbf·in / 5.1±1.0 N·m
Container Material	PP (UL 94-HB)
Weight (kg. / lb., Approx.)	17.87 / 39.39
Length (L) (mm / in)	228.0±2.5 / 8.98±0.10
Width (W) (mm / in)	138.4±1.5 / 5.45±0.06
Height (H) (mm / in)	219.3±2.5 / 8.63±0.10
Design Life	400 cycles @ 100%DOD at 25°C 1800 cycles @ 30%DOD at 25°C
Operating Temperature	Nominal: 25°C (77°F) Discharge: -15°C - 50°C (5°F-122°F) Charge/Storage: -15°C - 40°C (5°F - 104°F)
Float Charging Voltage	--
Eq. Charging Voltage	14.4 - 15.0 Vdc/battery 25°C (77°F)
Self-Discharge	Less than 10% after 90 days, can be stored up to 6 months and 10 months with equalization charge* at 25C (77F); Full recharging is required before usage, and charged sooner if stored at higher temperature than 25C (77F).



Valve Regulated Lead Acid
(VRLA) Battery

Maintenance-Free, Absorbent
Glass Mat (AGM) Technology for
Efficient Gas Recombination of
up to 99%

Pure Lead Construction and
Proprietary Elements

Designed for E-mobility or deep
cycling applications

Built in Accordance with IEC
60254-1:2005 / IEC60254-
2:2008, UL1973 Listed
(MH66728) and UL1989
Recognized (MH14533)

Certified by TUV NORD
according to ISO 9001:2015





EVX Series

EVX12520 Datasheet

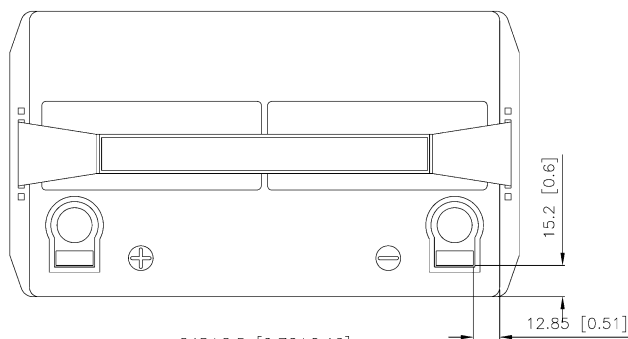
12V Top Terminal VRLA-AGM

Constant Current Discharge Characteristics Per Battery: Amperes (25°C, 77°F)

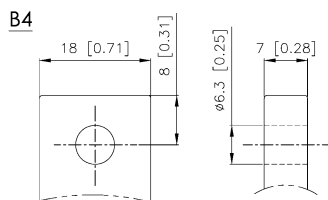
F.V/Time	30MIN	45MIN	60MIN	90MIN	2HR	3HR	4HR	5HR	6HR	8HR	10HR	20HR
10.02V (1.67 VPC)	63.5	45.9	36.4	26.8	20.8	14.6	11.6	9.52	8.22	6.52	5.36	2.80
10.50V (1.75 VPC)	60.6	44.1	35.2	26.1	20.3	14.3	11.4	9.37	8.05	6.34	5.21	2.72
10.80V (1.80 VPC)	59.2	43.3	34.7	25.6	20.1	14.2	11.3	9.26	7.94	6.22	5.12	2.68

Constant Power Discharge Characteristics Per Battery: Watts (25°C, 77°F)

F.V/Time	30MIN	45MIN	60MIN	90MIN	2HR	3HR	4HR	5HR	6HR	8HR	10HR	20HR
10.02V (1.67 VPC)	656	478	382	281	219	153	123	101	87.7	70.2	58.1	33.1
10.50V (1.75 VPC)	631	463	372	273	214	151	121	99.0	85.9	68.6	56.7	31.8
10.80V (1.80 VPC)	615	455	368	269	212	150	120	98.1	84.9	67.6	55.8	31.1



Detail A Drawing(3:1)



[M6 bolt & nut]

