

PRODUCT CATALOG



CSB | Powering Possibilities
Energizing *Tomorrow*

CSB | Powering Possibilities
Energizing *Tomorrow*

CSB ENERGY TECHNOLOGY CO., LTD



As a leading global manufacturer of high-quality, purpose-built Valve-Regulated Lead-Acid (VRLA) batteries, our products power critical applications in more than 100 countries. We engineer every battery for dependable performance, long service life, and consistent reliability across demanding environments. Our success is driven not only by our advanced, application-specific designs but also by our commitment to sustainable energy solutions—improving efficiency, supporting responsible manufacturing, and promoting robust recycling practices. Backed by a trusted worldwide distribution and support network, we deliver dependable, environmentally conscious power and energy storage solutions tailored to the needs of customers around the globe.



希世比能源科技股份有限公司
CSB Energy Technology Co., Ltd.

OUR MISSION

Our Mission for Today - We power possibilities by creating a sustainable future for all with our forward-thinking products focusing on delivery of quality power + energy storage.

OUR VISION

Our Vision for Tomorrow - Our goal is to energize tomorrow by becoming the premier power and energy partner across the world to solve challenges through our guiding principles of Creativity, Sincerity, and belief.



Thinking outside the status-quo to solve customer electrification problems with world-class existing products and development of new solutions.



Using our customer-first approach through superior service and support from start to finish.



Having the confidence to solve these electrification challenges through our diverse team culture of talented employees and partners.

GENERAL PURPOSE



POWERING
RELIABLE PERFORMANCE

CSB's GP and GPL series are dependable, maintenance-free VRLA-AGM batteries designed for a wide range of standby uses.

The GP series delivers reliable everyday backup power, while the GPL series offers extended service life for more demanding applications—making both ideal choices for commercial and industrial power needs.

GP Series



Valve Regulated Lead Acid (VRLA) Battery

Maintenance-Free, Absorbent Glass Mat (AGM) Technology for Efficient Gas Recombination of up to 99%

Pure Lead Construction and Proprietary Elements

Designed for High-Rate UPS, Float Service Standby Power Applications

Built in Accordance with IEC 61056-1/2:2012 & IEC 60896-21/22:2004, UL1973 Listed (MH66728) and UL1989 Recognized (MH14533)

Certified by TUV NORD according to ISO 9001:2015

Model	Voltage	Nominal Capacity (Ah)	Weight (kg)	Length (mm)	Width (mm)	Height (mm)	Terminal	Bolt
GP645	6	4.5	0.87	70.0	48.0	107.5	F1/F2	Faston Tab 187/250
GP672	6	7.2	1.22	151.0	34.0	100.7	F1/F2	Faston Tab 187/250
GP6120	6	12	1.85	151.0	50.0	100.5	F1/F2	Faston Tab 187/250
GP1245	12	4.5	1.66	92.8	69.9	107.7	F1/F2	Faston Tab 187/250
GP1272 VdS	12	7.2	2.40	150.9	64.8	98.6	F1/F2	Faston Tab 187/250
GP12120 VdS	12	12	3.67	151.0	98.0	100.3	F1/F2	Faston Tab 187/250
GP12170 VdS	12	17	5.50	181.0	76.2	167.0	B1/B3/B1B I1	M5
GP12200	12	20	5.80	181.0	76.0	165.0	I1	M5
GP12260 VdS	12	26	8.45	166.0	175.0	125.0	B1/B3/B1B I1	M5
GP12340	12	34	10.48	195.6	130.0	178.3	B5	M6
GP12400 VdS	12	40	12.92	197.0	165.0	170.4	B8 I2	M5 M6
GP12650 VdS	12	65	20.00	349.4	166.0	174.9	B4 I2	M6
GP121000	12	100	30.60	343.0	170.0	216.9	I2	M6
GP1245 (12V16W)	12	16 W	1.34	90.0	70.0	106.1	F1/F2	Faston Tab 187/250
GP1272 (12V25W)	12	24.5 W	1.84	150.9	64.8	98.6	F1/F2	Faston Tab 187/250
GP1272 (12V28W)	12	28 W	2.10	150.9	64.8	98.6	F1/F2	Faston Tab 187/250

*Nominal Capacity 15min-rate to 1.67V per cell @ 25°C (77°F);
Charging Voltage for Standby Use : 2.275±0.025 V/Cell at 25°C (77°F); Temp. Coefficient: -3.3mV/°C



Valve Regulated Lead Acid (VRLA) Battery

Maintenance-Free, Absorbent Glass Mat (AGM) Technology for Efficient Gas Recombination of up to 99%

Pure Lead Construction and Proprietary Elements

Designed for High-Rate UPS, Float Service Standby Power Applications

Built in Accordance with IEC 61056-1/2:2012 & IEC 60896-21/22:2004, UL1973 Listed (MH66728) and UL1989 Recognized (MH14533)

Certified by TUV NORD according to ISO 9001:2015

Model	Voltage	Nominal Capacity (Ah)	Weight (kg)	Length (mm)	Width (mm)	Height (mm)	Terminal	Bolt
GPL1272	12	7.2	2.60	150.9	64.8	98.6	F1/F2	Faston Tab 187/250
GPL12120	12	12	4.10	151.0	98.0	100.3	F1/F2	Faston Tab 187/250
GPL12260	12	26	8.30	166.0	175.0	125.0	B1/B3/B1B I1	M5
GPL12400	12	40	12.92	197.0	165.0	170.4	B8 I2	M5 M6
GPL12520	12	52	17.80	228.0	138.4	206.3	I2	M6
GPL12650	12	65	20.80	349.4	166.0	174.9	B4 I2	M6
GPL12750	12	75	25.60	261.0	168.5	213.5	I2	M6
GPL12800	12	80	25.60	261.0	168.5	213.5	I2	M6
GPL12800G	12	80	25.60	277.0	168.5	213.5	I2	M6
GPL12880	12	88	29.70	308.7	169.0	213.6	I2	M6
GPL121000	12	100	33.50	343.0	170.0	216.9	I2	M6

*Nominal Capacity 20hr-rate to 1.75V per cell @ 25°C (77°F)
 Charging Voltage for Standby Use: 2.275±0.025 V/Cell at 25°C (77°F); Temp. Coefficient: -3.3mV/°C



CSB's HR, HRL, UPS, XPL, XHT, XHRL, and PowerBox series deliver high-performance VRLA-AGM and Lithium-Ion power solutions engineered for modern data center UPS systems.

Designed for fast power discharge, long service life, and dependable standby performance, these batteries support everything from standard backup to high-rate, high-temperature, and extended-runtime applications. With maintenance-free operation and proven reliability, CSB's data center portfolio ensures uninterrupted power protection for mission-critical IT environments.

UPS Series



Valve Regulated Lead Acid (VRLA) Battery
 Maintenance-Free, Absorbent Glass Mat (AGM)
 Technology for Efficient Gas Recombination of up to 99%
 Pure Lead Construction and Proprietary Elements
 Designed for High-Rate UPS, Float Service Standby
 Power Applications
 Built in Accordance with IEC 61056-1/2:2012,
 UL1973 Listed (MH66728) and UL1989 Recognized
 (MH14533)
 Certified by TUV NORD according to ISO 9001:2015

Model	Voltage	Nominal Capacity (W)	Weight (kg)	Length (mm)	Width (mm)	Height (mm)	Terminal	Bolt
UPS122406	12	240	1.46	150.9	51.0	98.6	F1/F2	Faston Tab 187/250
UPS123606	12	360	1.97	150.9	51.0	98.6	F1/F2	Faston Tab 187/250
UPS123607	12	360	2.00	150.9	64.8	98.6	F1/F2	Faston Tab 187/250
UPS12460	12	460	2.50	150.9	64.8	98.6	F2	Faston Tab 250
UPS12580	12	580	2.83	150.9	64.8	98.6	F2	Faston Tab 250
RUM6290	6	290	1.46	150.9	34.0	98.6	F2	Faston Tab 250

*Nominal Capacity 5 min-rate to 9.6V per PCS @ 25°C (77°F)
 Charging Voltage for Standby Use: 2.275±0.025 V/Cell at 25°C (77°F); Temp. Coefficient: -3.3mV/°C

HR Series



Valve Regulated Lead Acid (VRLA) Battery
 Maintenance-Free, Absorbent Glass Mat (AGM)
 Technology for Efficient Gas Recombination of up to 99%
 Pure Lead Construction and Proprietary Elements
 Designed for High-Rate UPS, Float Service Standby
 Power Applications
 Built in Accordance with IEC 61056-1/2:2012,
 UL1973 Listed (MH66728) and UL1989 Recognized
 (MH14533)
 Certified by TUV NORD according to ISO 9001:2015

Model	Voltage	Nominal Capacity (W)	Weight (kg)	Length (mm)	Width (mm)	Height (mm)	Terminal	Bolt
HR1218W	12	18	1.53	150.9	51.0	98.6	F2	Faston Tab 250
HR1221W	12	21	1.80	90.0	70.0	106.1	F1/F2	Faston Tab 187/250
HR1224W	12	24	1.95	150.9	51.0	98.6	F1/F2	Faston Tab 187/250
HR1227W	12	27	1.97	90.0	70.0	106.1	F1/F2	Faston Tab 187/250
HR1232W	12	32	2.34	150.9	64.8	98.6	F2	Faston Tab 250
HR1234W	12	34	2.50	150.9	64.8	98.6	F2	Faston Tab 250
HR1251W	12	51	3.85	151.0	98.0	100.3	F2	Faston Tab 250
HR1290W	12	90	6.60	181.0	76.2	167.0	I1	M5
HR12120W	12	120	10.20	166.0	125.0	175.0	I1	M5

*Nominal Capacity 15 min-rate to 1.67V per cell @ 25°C (77°F)
 Charging Voltage for Standby Use: 2.275±0.025 V/Cell at 25°C (77°F); Temp. Coefficient: -3.3mV/°C

HRL Series



Valve Regulated Lead Acid (VRLA) Battery

Maintenance-Free, Absorbent Glass Mat (AGM) Technology for Efficient Gas Recombination of up to 99%

Pure Lead Construction and Proprietary Elements

Designed for High-Rate UPS, Float Service Standby Power Applications

Built in Accordance with IEC 61056-1/2:2012 & IEC 60896-21/22:2004, UL1973 Listed (MH66728) and UL1989 Recognized (MH14533)

Certified by TUV NORD according to ISO 9001:2015

Model	Voltage	Nominal Capacity (W)	Weight (kg)	Length (mm)	Width (mm)	Height (mm)	Terminal	Bolt
HRL634W	6	34	1.32	150.9	34.0	98.6	F2	Faston Tab 250
HRL1210W	12	10	1.10	178.0	34.0	70.5	F2	Faston Tab 250
HRL1225W	12	25	1.95	90.0	70.0	106.1	F2	Faston Tab 250
HRL1234W	12	34	2.70	150.9	64.8	98.6	F2	Faston Tab 250
HRL1250W	12	50	3.90	151.0	98.0	100.3	F2	Faston Tab 250
HRL1280W	12	80	6.60	181.0	76.0	165.0	I1	M5
HRL12110W	12	110	9.90	166.0	125.0	175.0	I1	M5
HRL12150W	12	150	11.95	195.6	130.0	174.8	I2	M6
HRL12150WG	12	150	11.95	195.6	130.0	172.0	I2	M6
HRL12200W	12	200	17.30	228.0	138.4	206.3	I2	M6
HRL12280W	12	280	25.80	261.0	168.5	213.5	I2	M6
HRL12330W	12	330	29.60	308.7	169.0	213.6	I2	M6
HRL12330WG	12	330	29.60	324.7	169.0	213.6	I2	M6
HRL12390W	12	390	33.00	343.0	170.0	216.9	I2	M6
HRL12540W	12	540	43.90	343.0	170.0	275.7	I2	M6

*Nominal Capacity 15 min-rate to 1.67V per cell @ 25°C (77°F)
Charging Voltage for Standby Use: 2.275±0.025 V/Cell at 25°C (77°F); Temp. Coefficient: -3.3mV/°C

XPL Series



Valve Regulated Lead Acid (VRLA) Battery

Maintenance-Free, Absorbent Glass Mat (AGM) Technology for Efficient Gas Recombination of up to 99%

Pure Lead Construction and Proprietary Elements

Designed for High-Rate UPS, Float Service Standby Power Applications

Built in Accordance with IEC 60896-21/22:2004, UL1973 Listed (MH66728) and UL1989 Recognized (MH14533)

Certified by TUV NORD according to ISO 9001:2015

Model	Voltage	Nominal Capacity (W)	Weight (kg)	Length (mm)	Width (mm)	Height (mm)	Terminal	Bolt
XPL2000	12	2000	13.58	197.0	165.0	170.4	I2	M6
XPL2200	12	2200	16.65	228.0	138.4	206.3	I2	M6
XPL2700	12	2700	18.52	228.0	138.4	206.3	I2	M6
XPL3500	12	3500	25.80	261.0	168.5	213.5	I2	M6
XPL4200	12	4200	28.20	261.0	168.5	213.5	I2	M6
XPL4700	12	4700	33.00	308.7	169.0	213.6	I2	M6
XPL5700	12	5700	36.90	343.0	170.0	216.6	I2	M6
XPL6700	12	6700	47.90	343.0	170.0	275.7	I2	M6

*Nominal Capacity 5 min-rate to 9.6V per PCS @ 25°C (77°F)
Charging Voltage for Standby Use: 2.275±0.025 V/Cell at 25°C (77°F); Temp. Coefficient: -3.3mV/°C

XPL-FT Series



Valve Regulated Lead Acid (VRLA) Battery

Maintenance-Free, Absorbent Glass Mat (AGM) Technology for Efficient Gas Recombination of up to 99%

Pure Lead Construction and Proprietary Elements

Designed for High-Rate UPS, Float Service Standby Power Applications

Built in Accordance with IEC 60896-21/22:2004, UL1973 Listed (MH66728) and UL1989 Recognized (MH14533)

Certified by TUV NORD according to ISO 9001:2015

Model	Voltage	Nominal Capacity (W)	Weight (kg)	Length (mm)	Width (mm)	Height (mm)	Terminal	Bolt
XPL7000FT	12	7000	49.70	558.0	126.0	255.0	I2	M6
XPL7700FT	12	7700	54.00	558.0	126.0	255.0	I2	M6
XPL8000FT	12	8000	65.30	558.0	126.0	323.0	I2	M6
XPL9000FT	12	9000	69.50	558.0	126.0	323.0	I2	M6

*Nominal Capacity 5 min-rate to 9.6V per PCS @ 25°C (77°F)
Charging Voltage for Standby Use: 2.275±0.025 V/Cell at 25°C (77°F); Temp. Coefficient: -3.3mV/°C

XHRL Series



Valve Regulated Lead Acid (VRLA) Battery

Maintenance-Free, Absorbent Glass Mat (AGM) Technology for Efficient Gas Recombination of up to 99%

Pure Lead Construction and Proprietary Elements

Designed for High-Rate UPS, Float Service Standby Power Applications

Built in Accordance with IEC 60896-21/22:2004, UL1973 Listed (MH66728) and UL1989 Recognized (MH14533)

Certified by TUV NORD according to ISO 9001:2015

Model	Voltage	Nominal Capacity (W)	Weight (kg)	Length (mm)	Width (mm)	Height (mm)	Terminal	Bolt
XHRL12170W	12	170	13.58	197.0	165.0	170.4	I2	M6
XHRL12250W	12	250	18.52	228.0	138.4	206.3	I2	M6
XHRL12360W	12	360	28.30	261.0	168.5	213.5	I2	M6
XHRL12360WG	12	360	28.30	277.0	168.5	213.5	I2	M6
XHRL12410W	12	410	32.60	308.7	169.0	213.6	I2	M6
XHRL12410WG	12	410	32.60	324.7	169.0	213.6	I2	M6
XHRL12475W	12	475	36.20	343.0	170.0	216.6	I2/ (1/4")	M6/ (1/4")
XHRL12500W	12	500	36.90	343.0	170.0	216.6	I2	M6
XHRL12620W	12	620	47.20	343.0	170.0	275.7	I2	M6
XHRL12650W	12	650	47.90	343.0	170.0	275.7	I2	M6

*Nominal Capacity 15 min-rate to 1.67V per cell @ 25°C (77°F)
Charging Voltage for Standby Use: 2.275±0.025 V/Cell at 25°C (77°F); Temp. Coefficient: -3.3mV/°C

XHRL-FT Series



Valve Regulated Lead Acid (VRLA) Battery

Maintenance-Free, Absorbent Glass Mat (AGM) Technology for Efficient Gas Recombination of up to 99%

Pure Lead Construction and Proprietary Elements

Designed for High-Rate UPS, Float Service Standby Power Applications

Built in Accordance with IEC 60896-21/22:2004, UL1973 Listed (MH66728) and UL1989 Recognized (MH14533)

Certified by TUV NORD according to ISO 9001:2015

Model	Voltage	Nominal Capacity (W)	Weight (kg)	Length (mm)	Width (mm)	Height (mm)	Terminal	Bolt
XHRL12600WFTFR	12	600	49.70	558.0	126.0	255.0	I2	M6
XHRL12720WFTFR	12	720	54.00	558.0	126.0	255.0	I2	M6
XHRL12800WFTFR	12	800	65.30	558.0	126.0	323.0	I2	M6
XHRL12900WFTFR	12	900	69.50	558.0	126.0	323.0	I2	M6

*Nominal Capacity 15 min-rate to 1.67V per cell @ 25°C (77°F)
Charging Voltage for Standby Use: 2.275±0.025 V/Cell at 25°C (77°F); Temp. Coefficient: -3.3mV/°C

Calor XHT-FT



Valve Regulated Lead Acid (VRLA) Battery, Maintenance-Free

Absorbent Glass Mat (AGM) with Exclusive Grid for 99% Gas Recombination

Pure Lead Construction and Catalyst 2X Proprietary Additive Technology

Constructed with High-Impact Resistant ABS plastic (UL 94-V0)

Designed for High-Rate and High-Temperature standby applications

Built in Accordance with IEC 60896-21/22:2004, UL1989(MH14533) and UL 1973 Certified (MH66728)

Model	Voltage	Nominal Capacity (W)	Weight (kg)	Length (mm)	Width (mm)	Height (mm)	Terminal	Bolt
XHT7000FT	12	7000	50.90	558.0	126.0	257.0	I2	M6
XHT7700FT	12	7700	54.00	558.0	126.0	257.0	I2	M6
XHT8000FT	12	8000	66.60	558.0	126.0	325.0	I2	M6
XHT9000FT	12	9000	71.10	558.0	126.0	325.0	I2	M6

*Nominal Capacity 5 min-rate to 9.6V per PCS @ 25°C (77°F)
Charging Voltage for Standby Use: 2.275±0.025 V/Cell at 25°C (77°F); Temp. Coefficient: -3.3mV/°C



High-Density Performance - up to 300kW per rack at 512Vdc; compact,scalable power for AI, cloud, andcritical UPS loads.

Smart System Control - Level-3 BMS with real-time monitoring, fault detection, and advanced battery protection.

Effortless Maintenance - Modular rack design enables fast battery replacement with no system downtime

Enhanced Safety - Individual thermal protection on each battery module

Model	Voltage	Power Capacity (5 min)	Energy Density	Operating Temperature (°C)	Communication Interfaces	Dimensions (mm H x W x D)	Weight (kg)
PB-300	512Vdc	320kW	72kWh	-40 to +65	RS485, CAN, FE, Drycontact	2000 x 600 x 1000	1100



POWERING SUSTAINABLE MOBILITY

CSB's EVH and EVX series are engineered for e-mobility and 12V automotive auxiliary power applications requiring dependable, high-cycle VRLA-AGM performance.

The EVH series is optimized for frequent deep-cycling in scooters, wheelchairs, and light electric vehicles, while the EVX series delivers higher power output and longer service life for more demanding mobility and traction uses. Together, they provide reliable, maintenance-free energy solutions for modern electric transportation.

EVX Series



Valve Regulated Lead Acid (VRLA) Battery

Maintenance-Free, Absorbent Glass Mat (AGM) Technology for Efficient Gas Recombination of up to 99%

Pure Lead Construction and Proprietary Elements

Designed for E-mobility or deep cycling applications

Built in Accordance with IEC 60254-1:2005 & IEC60254-2:2008, UL1973 Listed (MH66728) and UL1989 Recognized (MH14533)

Certified by TUV NORD according to ISO 9001:2015

Model	Voltage	Nominal Capacity (Ah)	Weight (kg)	Length (mm)	Width (mm)	Height (mm)	Terminal	Bolt
EVX1272	12	7.2	2.55	150.9	64.8	98.6	F1/F2	Faston Tab 187/250
EVX12120	12	12	3.83	151.0	98.0	100.3	F1/F2	Faston Tab 187/250
EVX12170	12	17	5.67	181.0	76.2	167.0	B1/B1B/B3	M5
EVX12200	12	20	6.55	181.0	76.0	165.0	I1	M5
EVX12260	12	26	8.65	166.0	175.0	125.0	B1/B3/B3B I1	M5
EVX12300	12	30	10.40	166.0	125.0	175.0	I1	M5
EVX12340	12	34	10.77	195.6	130.0	178.3	B5	M6
EVX12400	12	40	13.20	197.0	165.0	170.4	B8/I2	M5/M6
EVX12520	12	52	17.87	228.0	138.4	219.3	B4	M6
EVX12650	12	65	22.20	349.4	166.0	174.9	B4/I2	M6
EVX12750	12	75	25.60	277.0	168.5	232.5	B6	M6

*Nominal Capacity 20hr-rate to 1.75V per cell @ 25°C (77°F)
Charging Voltage for Standby Use: 2.45±0.05 V/Cell at 25°C (77°F); Temp. Coefficient: -3.3mV/°C

EVH Series



Valve Regulated Lead Acid (VRLA) Battery

Maintenance-Free, Absorbent Glass Mat (AGM) Technology for Efficient Gas Recombination of up to 99%

Pure Lead Construction and Proprietary Elements

Designed for E-mobility or deep cycling applications

Built in Accordance with IEC 60254-1:2005 & IEC60254-2:2008, UL1973 Listed (MH66728) and UL1989 Recognized (MH14533)

Certified by TUV NORD according to ISO 9001:2015

Model	Voltage	Nominal Capacity (Ah)	Weight (kg)	Length (mm)	Width (mm)	Height (mm)	Terminal	Bolt
EVH12140	12	14	4.33	151.0	98.0	98.4	F2	Faston Tab 250
EVH12150	12	15	4.60	151.0	98.0	101.8	F2	Faston Tab 250
EVH12240	12	24	7.55	181.0	76.2	170.0	I1	M5
EVH12390	12	39	11.5	195.6	130.0	178.3	B5	M6

*Nominal Capacity 20hr-rate to 1.75V per cell @ 25°C (77°F)
Charging Voltage for Cycle Use: 2.45±0.05 V/Cell at 25°C (77°F); Temp. Coefficient: -5.0mV/°C



POWERING RELIABLE COMMUNICATIONS

CSB's TPL, XTV, MSJ, and MSV series deliver robust, long-life VRLA-AGM performance engineered specifically for telecom backup.

Designed for stable operation in fixed wireless, broadband, and central office systems, these batteries offer high reliability, excellent standby endurance, and strong discharge characteristics. Across outdoor enclosures, remote sites, and non-temperature controlled environments, CSB telecom batteries provide dependable, maintenance-free power to keep critical communications running without interruption.



Valve Regulated Lead Acid (VRLA) Battery
 Maintenance-Free, Absorbent Glass Mat (AGM) Technology for Efficient Gas Recombination of up to 99%
 Pure Lead Construction and Proprietary Elements
 Designed for Float Service Standby Power Applications
 Built in Accordance with IEC 60896-21/22:2004, UL1973 Listed (MH66728) and UL1989 Recognized (MH14533)
 Certified by TUV NORD according to ISO 9001:2015

Model	Voltage	Nominal Capacity (Ah)	Weight (kg)	Length (mm)	Width (mm)	Height (mm)	Terminal	Bolt
TPL12400T	12	40	15.00	280.0	105.0	195.0	I2	M6
TPL12600T	12	60	21.20	280.0	105.0	260.0	I2	M6
TPL121000FR	12	100	38.30	511.6	110.0	255.5	I2	M6
TPL121000TFR	12	100	34.80	390.0	105.0	280.0	I2	M6
TPL121250AFR	12	125	44.70	547.0	124.8	320.3	I2	M6
TPL121600FR	12	160	54.80	547.0	124.8	320.3	I2	M6
TPL121800FR	12	180	55.10	547.0	124.8	320.3	I2	M6
TPL122000FR	12	200	59.70	560.0	124.0	323.0	I2	M6

*Nominal Capacity 10hr-rate to 1.80V per cell @ 25°C (77°F)
 Charging Voltage for Standby Use: 2.275±0.025 V/Cell at 25°C (77°F); Temp. Coefficient: -3.3mV/°C

MSJ Series



Valve Regulated Lead Acid (VRLA) Battery

Maintenance-Free, Absorbent Glass Mat (AGM) Technology for Efficient Gas Recombination of up to 99%

Pure Lead Construction and Proprietary Elements

Designed for High Capacity Float Service Standby Power Applications

Built in Accordance with IEC 60896-21/22:2004, UL1973 Listed (MH66728) and UL1989 Recognized (MH14533)

Certified by TUV NORD according to ISO 9001:2015

Model	Voltage	Nominal Capacity (Ah)	Weight (kg)	Length (mm)	Width (mm)	Height (mm)	Terminal	Bolt
MSJ-150	2	150	12.80	170.0	106.0	339.0	I4	M8
MSJ-200	2	200	15.00	170.0	106.0	339.0	I4	M8
MSJ-260	2	260	18.70	170.0	131.0	339.0	I4	M8
MSJ-300	2	300	21.80	170.0	150.0	339.0	I4	M8
MSJ-400	2	400	28.60	197.0	170.0	339.0	I4	M8
MSJ-500	2	500	36.50	241.0	171.0	339.0	I4	M8
MSJ-650	2	650	46.60	307.0	171.0	339.0	I4	M8
MSJ-800	2	800	56.70	373.0	174.0	339.0	I4	M8
MSJ-1000	2	1000	72.80	471.0	171.0	339.0	I4	M8

*Nominal Capacity 10hr-rate to 1.80V per cell @ 25°C (77°F)
Charging Voltage for Standby Use: 2.23±0.02 V/Cell at 25°C (77°F); Temp. Coefficient: -3.3mV/°C

MSV Series



Valve Regulated Lead Acid (VRLA) Battery

Maintenance-Free, Absorbent Glass Mat (AGM) Technology for Efficient Gas Recombination of up to 99%

Pure Lead Construction and Proprietary Elements

Designed for High Capacity Float Service Standby Power Applications

Built in Accordance with IEC 60896-21/22:2004, UL1973 Listed (MH66728) and UL1989 Recognized (MH14533)

Certified by TUV NORD according to ISO 9001:2015

Model	Voltage	Nominal Capacity (Ah)	Weight (kg)	Length (mm)	Width (mm)	Height (mm)	Terminal	Bolt
MSV-200	2	200	13.60	170.0	106.0	339.0	I4	M8
MSV-300	2	300	18.20	170.0	150.0	339.0	I4	M8
MSV-400	2	400	24.90	197.0	170.0	339.0	I4	M8
MSV-500	2	500	31.20	241.0	171.0	339.0	I4	M8
MSV-650	2	650	41.40	307.0	171.0	339.0	I4	M8
MSV-800	2	800	50.60	373.0	174.0	339.0	I4	M8
MSV-1000	2	1000	64.40	471.0	171.0	339.0	I4	M8

*Nominal Capacity 10hr-rate to 1.80V per cell @ 25°C (77°F)
Charging Voltage for Standby Use: 2.23±0.02 V/Cell at 25°C (77°F); Temp. Coefficient: -3.3mV/°C

MU Series



Valve Regulated Lead Acid (VRLA) Battery

Maintenance-Free, Absorbent Glass Mat (AGM) Technology for Efficient Gas Recombination of up to 99%

Pure Lead Construction and Proprietary Elements

Designed for High Capacity Float Service Standby Power Applications

Built in Accordance with IEC 60896-21/22:2004, UL1973 Listed (MH66728) and UL1989 Recognized (MH14533)

Certified by TUV NORD according to ISO 9001:2015

Model	Voltage	Nominal Capacity (Ah)	Weight (kg)	Length (mm)	Width (mm)	Depth (mm)	Terminal	Bolt
MU900S	2	900	55.90	303.0	172.0	497.0	I3	M10
MU1000	2	1000	54.50	303.0	172.0	497.0	I3	M10
MU1000S	2	1000	62.50	303.0	172.0	497.0	I3	M10
MU1500S	2	1500	91.50	437.0	172.0	497.0	I3	M10

*Nominal Capacity 10hr-rate to 1.80V per cell @ 25°C (77°F)
Charging Voltage for Standby Use: 2.23±0.02 V/Cell at 25°C (77°F); Temp. Coefficient: -3.3mV/°C

XTV Series



Valve Regulated Lead Acid (VRLA) Battery

Maintenance-Free, Absorbent Glass Mat (AGM) Technology for Efficient Gas Recombination of up to 99%

Pure Lead Construction and Proprietary Elements

Designed for Float Service Standby Power Applications in Extreme Temperature Environments

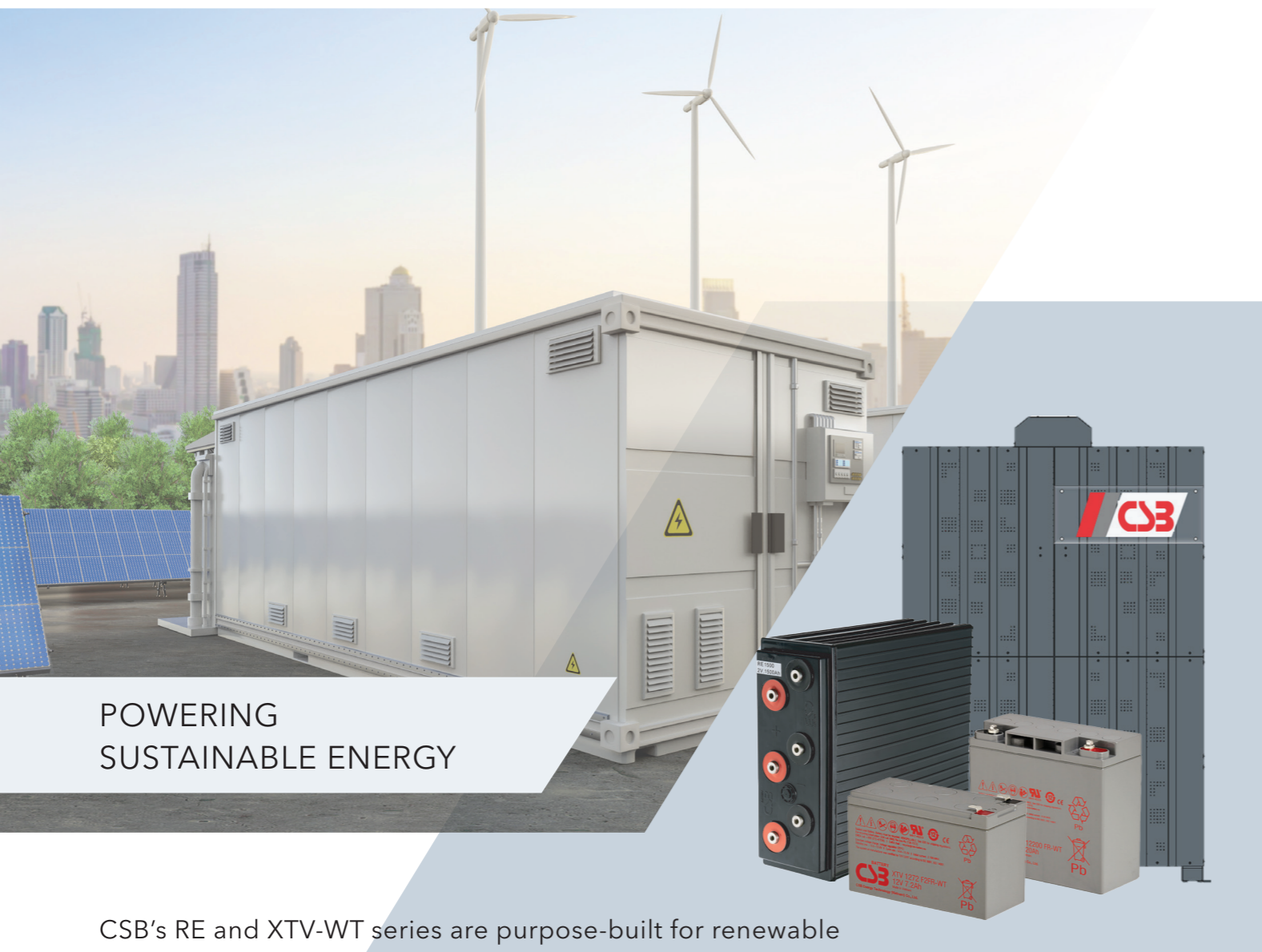
Built in Accordance with IEC 61056-1/2:2012 & IEC 60896-21/22:2004, UL1973 Listed (MH66728) and UL1989 Recognized (MH14533)

Certified by TUV NORD according to ISO 9001:2015

Model	Voltage	Nominal Capacity (Ah)	Weight (kg)	Length (mm)	Width (mm)	Height (mm)	Terminal	Bolt
XTV1272	12	7.2	2.57	150.9	64.8	98.6	F2	Faston Tab 250
XTV1285	12	8.5	2.62	150.9	64.8	98.6	F2	Faston Tab 250
XTV12120	12	12	4.10	151.0	98.0	101.8	F2	Faston Tab 250
XTV12200	12	20	6.35	181.0	76.0	165.0	I1	M5
XTV12550	12	55	17.90	228.0	138.4	206.3	I2	M6
XTV12800	12	80	25.50	261.0	168.5	213.5	I2	M6
XTV121000	12	100	30.20	308.7	169.0	213.6	I2	M6
XTV121100	12	110	34.20	343.0	170.0	216.9	I2	M6

*Nominal Capacity 20hr-rate to 1.75V per cell @ 25°C (77°F)
Charging Voltage for Standby Use: 2.275±0.025 V/Cell at 25°C (77°F); Temp. Coefficient: -3.3mV/°C

RENEWABLE ENERGY



POWERING SUSTAINABLE ENERGY

CSB's RE and XTV-WT series are purpose-built for renewable energy storage, offering reliable, maintenance-free VRLA-AGM performance in solar, wind, and off-grid systems.

The RE series provides stable daily cycling for residential and commercial installations, while the XTV-WT series delivers enhanced durability and long life in harsh outdoor environments. Together, they offer dependable, high-efficiency energy storage for a wide range of renewable applications.

XTV-WT Series



Valve Regulated Lead Acid (VRLA) Battery

Maintenance-Free, Absorbent Glass Mat (AGM) Technology for Efficient Gas Recombination of up to 99%

Pure Lead Construction and Proprietary Elements

Designed for Wind Turbine Applications

Built in Accordance with IEC 61056-1/2:2012, UL1973 Listed (MH66728) and UL1989 Recognized (MH14533)

Certified by TUV NORD according to ISO 9001:2015

Model	Voltage	Nominal Capacity (Ah)	Weight (kg)	Length (mm)	Width (mm)	Height (mm)	Terminal	Bolt
XTV1272F2FR-WT	12	7.2	2.57	150.9	64.8	98.6	F2	Faston Tab 250
XTV12120F2FR-WT	12	12	4.10	151.0	98.0	101.8	F2	Faston Tab 250
XTV12200FR-WT	12	20	6.35	181.0	76.0	165.0	I1	M5

*Nominal Capacity 20hr-rate to 1.75V per cell @ 25°C (77°F)
Charging Voltage for Standby Use: 2.275±0.025 V/Cell at 25°C (77°F); Temp. Coefficient: -3.3mV/°C

RE Series



Valve Regulated Lead Acid (VRLA) Battery

Maintenance-Free, Absorbent Glass Mat (AGM) Technology for Efficient Gas Recombination of up to 99%

Pure Lead Construction and Proprietary Elements

Designed for Deep Cycle High Capacity Applications

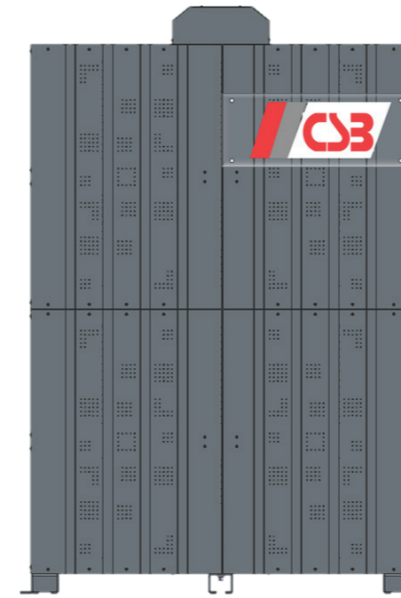
Built in Accordance with IEC 61427, UL1973 Listed (MH66728) and UL1989 Recognized (MH14533)

Certified by TUV NORD according to ISO 9001:2015

Model	Voltage	Nominal Capacity (Ah)	Weight (kg)	Length (mm)	Width (mm)	Depth (mm)	Terminal	Bolt
RE1200	2	1200	73.8	303.0	172.0	497.0	I3	M10
RE1700	2	1700	110.0	437.0	172.0	497.0	I3	M10

*Nominal Capacity 100hr-rate to 1.80V per cell @ 25°C (77°F)
Charging Voltage: Please consult with CSB

RE 48V



Valve Regulated Lead Acid (VRLA) Battery with Carbon Additives

Maintenance-Free Absorbent Glass Mat (AGM) Technology for Efficient Gas Recombination of up to 99%

Pure Lead Construction and Proprietary Elements Using Carbon to Enhance Cycle Life, up to 3,800 Cycles at 50% Depth of Discharge

10-Year Full Replacement Warranty

Suitable for Energy Storage and Power Fluctuation Control– Enhanced IEC 61427 Standard
Applicability for PSoC Cycling in Renewable Energy Systems, Including Photovoltaic (PV) Applications.

Model	Voltage	Nominal Capacity (Ah)	Weight (kg)	Length (mm)	Width (mm)	Height (mm)	Terminal	Bolt
48RE1200	48	1200	2007.2	55.4	112.3	170.9	I3	M10

*Nominal Capacity 100hr-rate to 1.75V per cell @ 25°C (77°F)
Charging Voltage: Please consult with CSB

GLOBAL REACH

CSB Energy Technology Co., Ltd. GLOBAL HQ

11F, No. 150, Sec. 4, Chengde Rd.,
Shilin Dist., Taipei City 111052, Taiwan (R.O.C.)
Tel: +886-2-2880-5600
Mail: service@csb-battery.com.tw

CSB Energy Technology (Americas) Co., Ltd. AMERICA HQ

4008 Clay Avenue, Suite 210,
Haltom City, TX 76117, U.S.A
Tel: +1-817-244-7777 / 1-(800)3-CSB-USA(272872)
Mail: Service@csb-battery.com

CSB Energy Technology (ShaoGuan) Co., Ltd. SHENZHEN BRANCH

Room 209, Floor 2, Building A, Xincheng Plaza, No.86,
Puxia Road, Liuyue Community, Henggang Street,
Longgang District, Shenzhen, China
Tel: +86-755-88316075 / +86-755-88316488 /
+86-755-88316775
Mail: service@csb-battery.com.cn

CSB Energy Technology (EMEA) B.V. EUROPE HQ

Keurmeesterstraat 28-30,
2984 BA Ridderkerk, The Netherlands
Tel: +31(0)180-418-140
Mail: Service@csb-battery.eu

CSB Energy Technology (Shanghai) Co., Ltd. SHANGHAI BRANCH

Room 2304, You You International Plaza, No. 76,
Pujian Road, Shanghai, China
Tel: +86-21-50461622 / +86-21-50460833 /
+86-21-50460094
Mail: service@csb-battery.com.cn

MANUFACTURING LOCATIONS:

CSB Energy Technology Co., Ltd. TAIWAN GUANTIAN FACTORY

No.16, Gongye W. Rd., Erzhen Village,
Guantian District, Tainan City 720008, Taiwan (R.O.C.)
Tel: +886-6-698-7600
Fax: +886-6-698-5734

CSB Energy Technology (Vietnam) Co., Ltd. VIETNAM FACTORY

4 Street, Nhon Trach 3IP, Second Phase, Phuoc An
Commune, Dong Nai Province, Vietnam
Tel: +84-251-3569122
Fax: +84-251-3569165

